

LF DOME SPACE FRAME



LEAD FRAME ENGINEERING CO.,LTD.
XUZHOU LF ENGINEERING&CONSTRUCTION CO.,LTD.



222, Block B, Diamond International,
Guozhuang Road, Xuzhou, Jiangsu, China



+86 516 8595 0258



+86 516 8595 0278



www.cnxzl.com



admin@cnxzl.com



COMPANY PROFILE

COMPANY ADVANTAGES

LF DESIGN

LF CERTIFICATE

FABRICATION

TESTING

PACKAGE

SHIPMENT

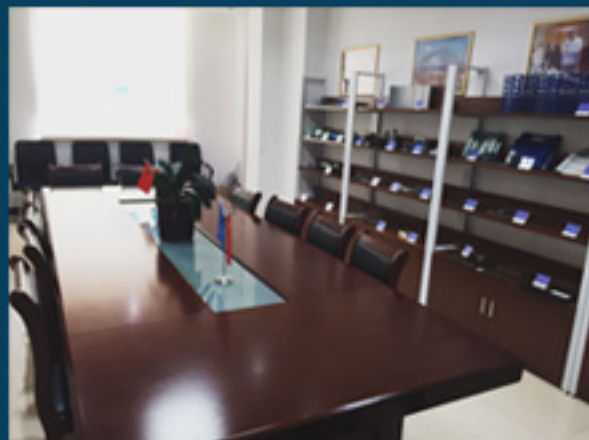
INSTALLATION

WARRANTY



Company Profile

LF (Lianfa Factory & Lead Frame Engineering) is professional manufacturer and engineering company for space frame and steel structure project with full capability of RESEARCH, DESIGN, FABRICATION, CONSTRUCTION, SUPERVISION SERVICE FOR OVERSEA PROJECT.



The company has equipped with advanced software and system, and it has many experienced designers and technical engineers.

Also the company has already established strategic cooperation relationship with many universities, construction design institutes, etc. which enable the company to have high capability of designing and consulting in the professional field.



Company Advantages

Our competitiveness arises from advanced engineering for tubular structures that allow:

- Any structure, Shape, Span & Loading
- Optimized minimum mass design
- Durable materials & finishes (Galvanized & Stainless Steel, Aluminum, Composites & Factory-applied Finishes)
- Fast Delivery & Construction in Any Location

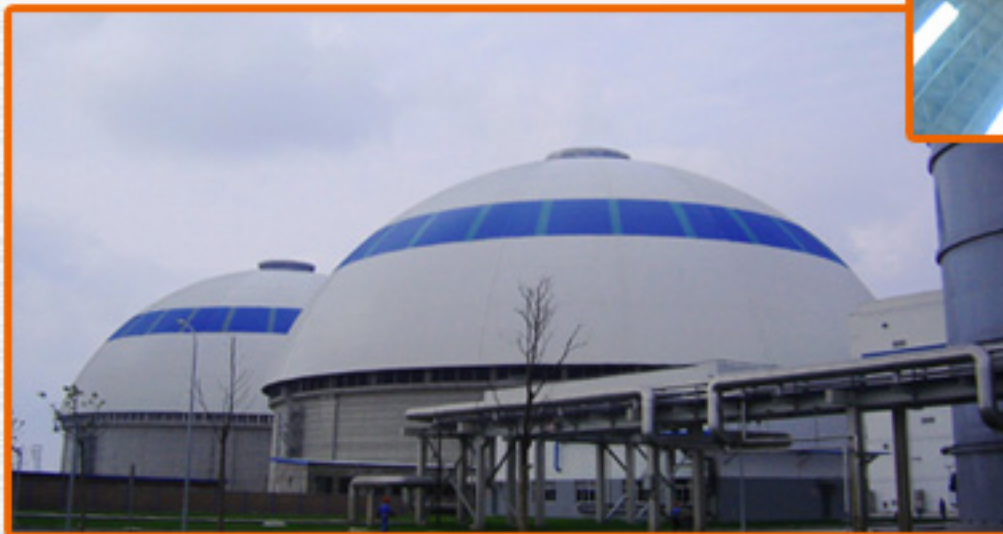
For over 15 years, LF has been recognized internationally for its expertise in design & construction of space frames, domes & free-form structures with all product compliant with sustainable building requirements. LF is credited with many landmark projects throughout China, Malaysia, Thailand, Philippines, U.A.E., Jordan, Australia, India, Maldives, Africa, etc.

LF maintains high engineering standards and talented management to consistently ensure the design, construction & service requirements of each structure & application are affordably achieved.



LF Design

Our design team is comprised of professional engineers with master's or bachelor degrees. Using software SFCAD, 3D3S, PKPM, PS2000, AUTOCAD, they are able to ensure the quality of designs of our structures.



We also have already established strategic cooperation relationship with many universities, construction design institutes, etc. which enable the company to have high capability of designing and consulting in the professional field.

We are good at designing in accordance to design code of AISC, BS, DIN, JIS and GB to satisfy different customers' requirements.



DOME SHAPE PATENT



DOME SHAPE PATENT



BARREL SHAPE PATENT



BARREL SHAPE PATENT

Company's Certificate



MATERIAL TEST



SGS



AHS



WELDING



ISO9001



TEST REPORT



CE



SONCAP



SCIENTIFIC AWARD



Space Frame Structure Fabrication



Test Raw Material



Cutting



Welding



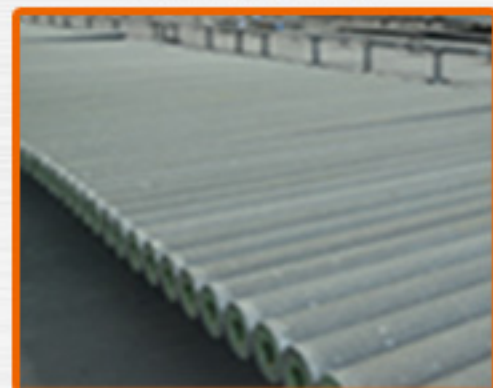
Flaw Detection



Blast Cleaning



Preparation



Spray Painting



Test Paint Thickness



Bolt Ball



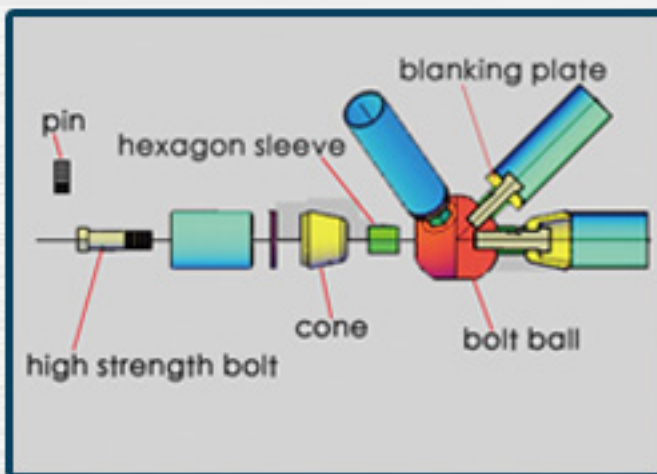
Cone



High Strength Bolt



Blanking Plate



Sleeve



Bracket

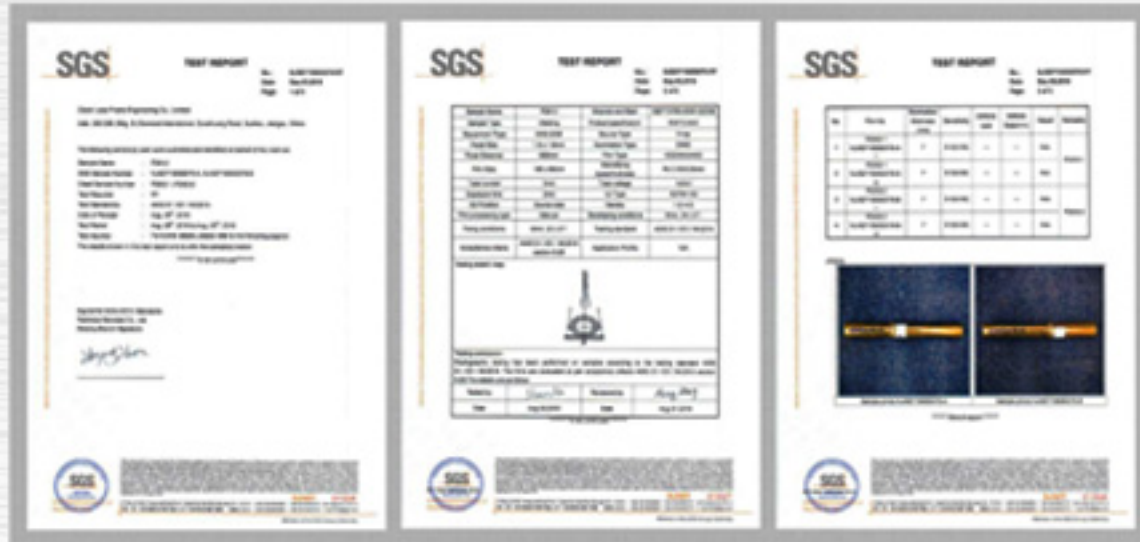


Support



Jackscrew

Space Frame Structure Fabrication



SGS WPQ (welding procedure qualification)

SGS CERTIFICATE (material test)



Test Reports Are Issued By National Space Frame and Steel Structures Quality Supervision and Inspection Center



Finishing Treatment System I (Recommend):

Paints	1 st paint	2 nd paint	3 rd paint
Paint name	Epoxy zinc-rich prime	Micaceous iron epoxy medium paint	Acrylic PU finishing coat
Dry paint thickness	60μm	30μm	35μm

Finishing Treatment System II :

Paints	1 st paint	2 nd paint	3 rd paint
Paint name	Galvanized or zinc spray	Epoxy sealer	Epoxy sealer
Dry paint thickness	60μm	20μm	20μm

Finishing Treatment System III :

Paints	1 st paint	2 nd paint	3 rd paint
Paint name	Galvanized or zinc spray	Powder coating	
Dry paint thickness	60μm		

Other finishing treatment system: By customer' s request)



Packing

Small parts packed
in wood carton Big parts packed
by steel frame

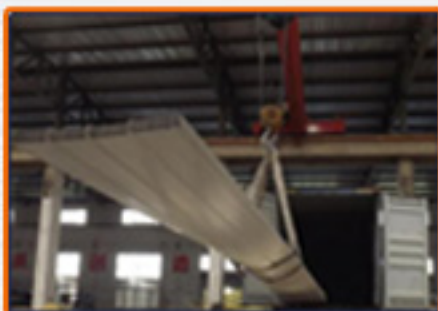


Shipment

Delivery goods in factory
and transported to sea port by truck
Container loading



Color Corrugated Steel Sheet

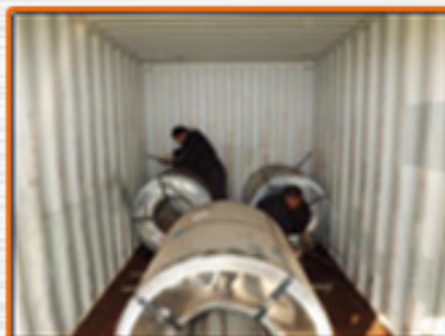


Corrugate Sheet in Factory

Color painted steel coil will be corrugated in factory

Container loading in factory

It is suit for small quantities, short installation period projects



Corrugate sheet in site

Reinforce color painted steel coil in container

Corrugate steel sheet in project site

It is suit for large quantity, long installation period projects



Finished Installation Project

PHILIPPINE APEC COAL SHED

PHILIPPINE CALACA 2X135MW POWER PLANT COAL STORAGE

PHILIPPINE TOLEDO COAL SHED



material sorting



unit assembly on ground



unit assembly on ground



hoisting installation



installation in high altitude

Installation Process Of Dome Space Frame Project



installation in high altitude



preparation of purlin



installation of purlin in
high altitude



installation of purlin in
high altitude



installation of roof panel



installation of roof panel



space frame completed



Installation

— Installation: Supervision

According to the project quantity and complexity, 1-3 engineers who have rich experience in installation will be sent to do supervision in site.

For now, supervision projects has been in Philippines, Togo, Malaysia, UAE. All spoke highly by the owner.



INSTALLATION SUPERVISION



Part of Finished Project Case



NINE DRAGONS PAPER COAL
YARD DOMES (2 sets)



HOUSHI POWER PLANT COAL
YARD DOMES (7 sets)



SHANGHAI CAOJING POWER
PLANT COAL YARD
DOMES (2 sets)



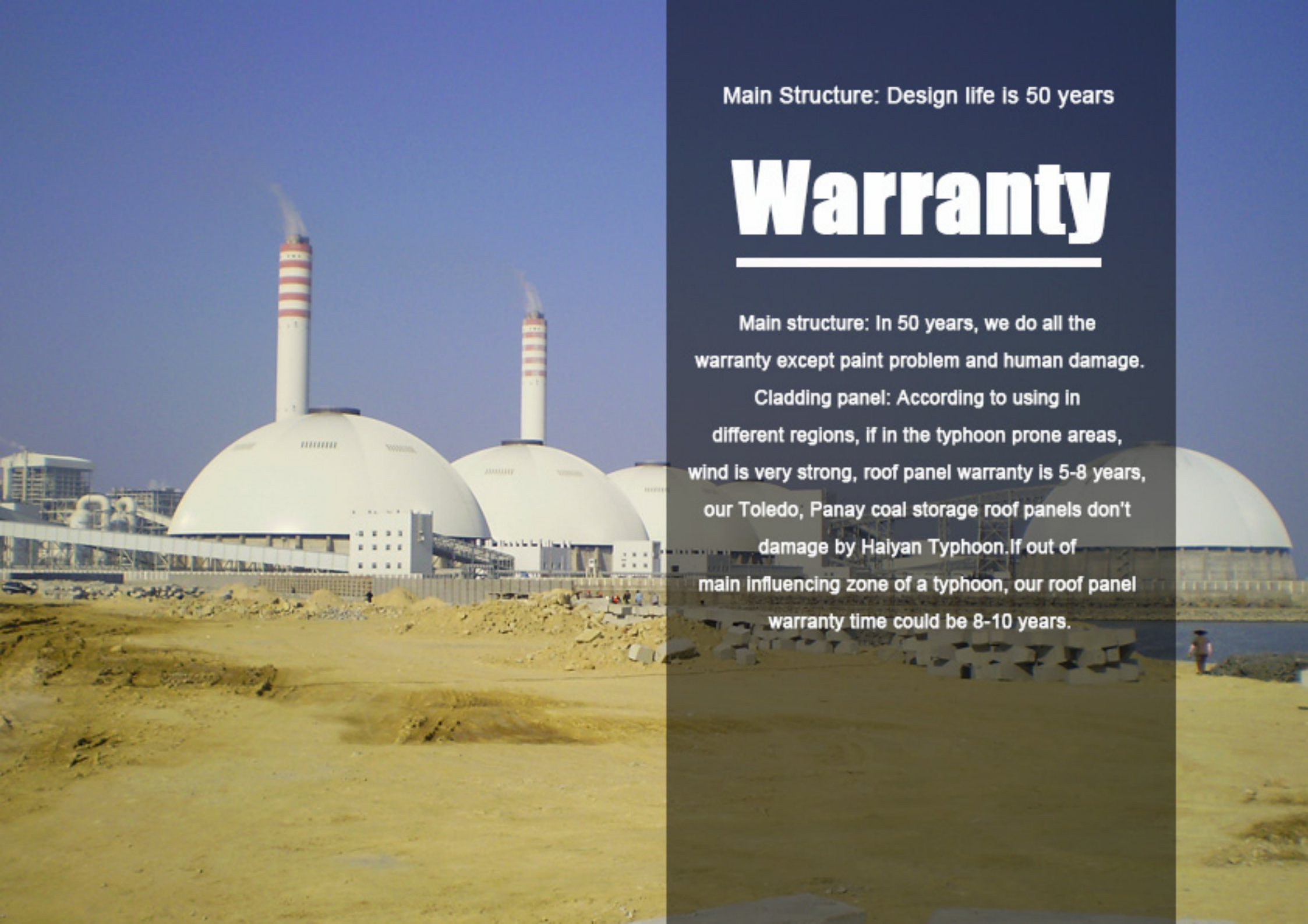
GUANGDONG HUILAI POWER
PLANT



DATANG NANJING POWER PLANT
COAL YARD DOMES (2 sets)



HUANENG NANJING JINLING
POWER COAL YARD
DOMES (2 sets)



Main Structure: Design life is 50 years

Warranty

Main structure: In 50 years, we do all the warranty except paint problem and human damage.

Cladding panel: According to using in different regions, if in the typhoon prone areas, wind is very strong, roof panel warranty is 5-8 years, our Toledo, Panay coal storage roof panels don't damage by Haiyan Typhoon. If out of main influencing zone of a typhoon, our roof panel warranty time could be 8-10 years.